

# ALCATEL 4610

## Voice mail and automated attendant

### Functions

#### Voice mail

##### Message deposit:

- Standard or personalised greeting message,
- Forwarding of called extension or direct access to voice mail from any internal or external telephone,
- Users can review, validate, delete and re-record messages,
- Common mailbox to leave messages for users without a personal mailbox, for an entire department, or for the company,
- Forwarding of voice message from one mailbox to another,
- Callers can return to automated attendant main menu after leaving a message.

##### Message waiting information:

- Notification of message waiting on user telephone set.

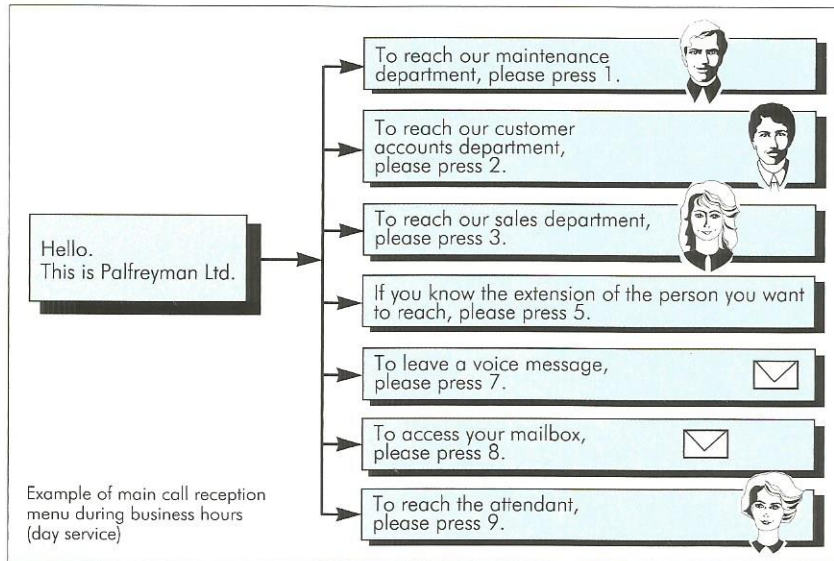


##### Consulting a message:

- Mailbox can be checked from inside or outside the company using any DTMF telephone,
- Voice prompts guide users through messaging system functions,
- Personal password protection,
- Message time and date "stamp".

## Automated attendant

- Direct access to automated attendant or by DID\* on no answer or busy called extension,
- Programmable greeting message ; 24-hour call reception,
- Adaptable day/night menus,
- Main menu proposes 10 options, 7 of them may be personalised,
- Callers can leave voice messages, • DTMF dialling,
- Callers can always be connected to the attendant by pressing "9",
- Call transfer monitoring with messages:
  - "The extension called does not answer" or
  - "This extension is busy" or
  - "This extension does not exist",
- May be used to back up the attendant during peak hours.



## Technical characteristics

### System

- Access: 1 analog port,
- Environment: Temperature: 15°C to 35°C, Relative humidity: 20% to 80%,
- Dialling: DTMF (conform to CCITT Q23),
- Digital recording.

### Voice mail

- Mailbox capacity: 1 to 4 personal mailboxes including 1 common mailbox,
- Storage capacity: Maximum 20 minutes total capacity.

### Automated attendant

Call routing: via DTMF, 1 level, 10 options (3 fixed, 7 programmable), 2 main menus (day/night service).

	System type		
	External system		Integrated printed circuit board**
	AC	DC	
Power supply	230 V/AC ± 10% 50 Hz I = 200 mA	12 V/DC 10,5 - 15 V I = 260 mA	12 V/DC (10,5 - 15 V) I = 260 mA - 5 V/DC (4,75 - 5,35 V) I = 8 mA
Dimensions	288,44 x 168 x 37,2 mm		160,02 x 259,08 mm

\* Depending on Public Network  
\*\* In certain Alcatel PABX



Alcatel Business Systems International  
Postal address: 54 avenue Jean-Jaurès - 92707 Colombes Cedex - France  
Tel.: (33-1) 47 69 47 69

*Fluoridge*

TA 4610 GB ABSI 5/93 - Alcatel Business Systems International reserves the right to modify the product characteristics, without notice, in order to conform with new standards or to improve product performance. Headquarters: 12, rue de la Boume - 75008 Paris France - S.A. au capital de 737 425 100 F. - R.C.S. Paris B 602 033 185